



Graphing Calculator

Version 1.0

© 2006 Infinity Softworks, Inc.

www.infinitysw.com/ets

10/4/2005

Table of Contents

Part I Overview	1
Part II Navigation	2
Part III Using the Calculator	3
1 Display	3
2 Performing Calculations	4
3 Memory	5
4 History	6
Part IV My Data	7
Part V Solver	9
Part VI Graphing	11
1 Overview	11
2 My Graphs	12
3 New/Edit Graph	13
4 Graph View	15
Analysis Modes	16
Graph Table	18
Zooming/Graph Window	19
Part VII Functions	21
1 Symbol Chart	21
2 Categories	22
3 A,B,C	22
Absolute Value	22
Addition	23
And	23
Arc-Cosine	23
Arc-Sine	23
Arc-Tangent	23
Backspace	24
Clear	24
Combinations	24
Cosine	24
4 D,E,F,G,H	24
Decimal Separator	24
Division	25
e	25
Enter	25
Equals	25

Exponent	26
Exponential	26
Factorial	26
Greater Than	26
Greater Than or Equal To	26
5 I,J,K,L,M,N	27
Integer	27
Last	27
Less Than	27
Less Than or Equal To	27
Logarithm	27
Multiplication	28
Natural Logarithm	28
Negate	28
Not Equal	28
6 O,P,Q	28
Or	28
Parentheses	29
Percent	29
Permutations	29
pi	29
Power	30
Power of 10	30
Quotation Marks	30
7 R,S,T	30
Reciprocal	30
Root	30
Semi-Colon	31
Sine	31
Solve	31
Square	32
Square Root	32
Subtraction	32
Tangent	32

Part VIII Appendix 34

1 Calculator Error Messages	34
2 Number Ranges	34
3 Implicit Multiplication	34
4 Legal and Disclaimers	35

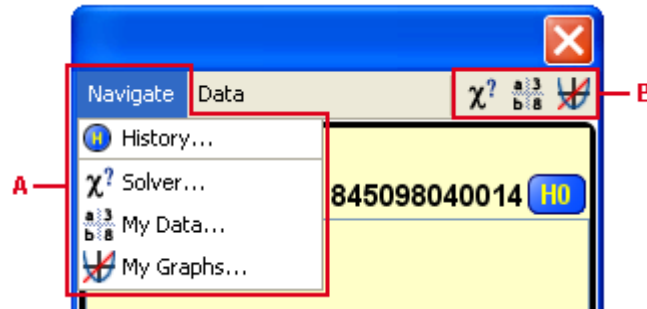
1 Overview

This manual is intended as a reference for the graphing calculator software developed by Infinity Softworks and included in ETS' online and computer-based testing environments.

The web pages in support of this version can be found at:

<http://www.infinitysw.com/ets>

2 Navigation



Use the Navigation Bar and Menu to access other parts of the application:

A. Navigation Bar

- History: list of previous calculations.
- Solver: find numerical solutions to equations.
- My Data: list of assigned variables.
- My Graphs: create and view graphs.

B. Navigation Menu (left to right)

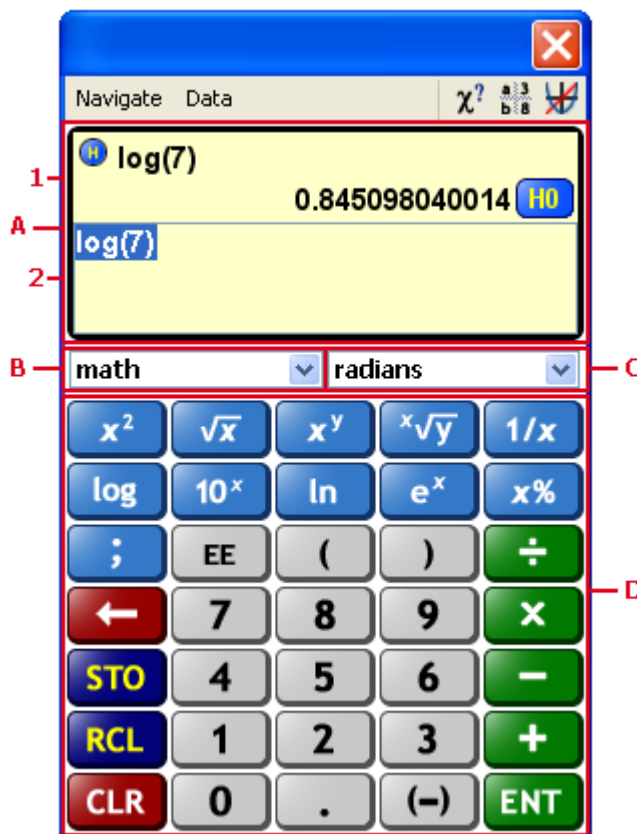
- Solver: find numerical solutions to equations.
- My Data: list of assigned variables.
- My Graphs: create and view graphs.

In History, Solver, My Data and My Graphs, select the "Done" button in the lower, left-hand corner of the screen to return to the calculator.

To exit the software, select the [x] in top, right-hand corner.

3 Using the Calculator

3.1 Display



A. View Window: To calculate, enter an expression in the input area [2]. Use either the keypad [D] or computer keyboard and select "ENT" to evaluate. The expression is evaluated and displayed in the history area [1].

- The last calculation is displayed and highlighted in the input area [2].
- In the history area [1], the top line shows the last expression and the bottom line shows the last result of that expression.
- If the last expression is too long to display, ellipses (...) will appear. Select the appropriate ellipse to scroll left or right.
- Select the last expression or result to use it in a new expression. Select the History Location [H0 as pictured above] to return its full precision instead of the displayed result.
- For additional information, see the History section.

B. Function List: changes the function keys in the first two rows in the keypad. Select the list once to see the options - math, number, trig, boolean - then select again to choose.

C. Trig Mode: choose between radians or degrees mode. Select the list once to see the options - radians, degrees - then select again to choose.

D. Keypad: calculator keypad consists of numbers, functions, backspace, clear, negate and memory buttons. Most keypad buttons include a tip. Hover the mouse over a button until it appears (not available during the test period).

- 0-9: numbers 0 through 9.
- [decimal separator](#): separates the whole and decimal portions of a number. Displayed as a period.

- [\(-\)](#): select to insert a negative sign.
- [EE](#): select to enter a value in exponential notation.
- +, -, x, ÷ ([addition](#), [subtraction](#), [multiplication](#), [division](#)): basic mathematics functions.
- [ENT](#): enter key. Select to evaluate an expression.
- [CLR](#): clears the input area [2]. If there is nothing in the input area, clears the last expression/result [1].
- STO: select to store a value to one of ten memory locations. See the [Memory](#) section for additional information.
- RCL: select to recall a value from one of ten memory locations. See the [Memory](#) section for additional information.
- ← ([backspace](#)): deletes the highlighted area or space before the cursor.
- ; ([semi-colon](#)): used as a separator between function arguments.
- Additional Functions: the remaining functions (first two rows of the Keypad) change based on the Function List [B] selection. See the [Functions : Categories](#) section for additional information.

E. Menus: there are two menus plus icons.

- Navigate: see the [Navigation](#) section for information.
- Data: select to choose Clear options for product sections.
 - Clear Memory: clears the memory locations.
 - Clear History: clears the history list.
 - Clear My Data: clears the data.
 - Clear My Graphs: clears the graphs and window settings.
 - Reset to Defaults: removes all saved information and resets the entire application to its default settings. Data and settings are not saved between sessions. Closing the application performs the same as Reset to Defaults.
- Icons: see the [Navigation](#) section for information.

3.2 Performing Calculations

This graphing calculator uses Algebraic Input Mode. In algebraic mode, the entire equation is entered then the [ENT] button is selected to evaluate the equation.

The following chart outlines function precedence. Functions with a lower order are executed before functions with a higher order:

Order	#Function
1	Negative (-x)
2	Powers and roots
3	Multiplication, division, and percentages
4	Addition and subtraction
5	Relationship operations (>, <=)
6	Logic or Boolean operations (or, and)

For example, $27 + 3 \times 8.5$ is evaluated as $(3 \times 8.5) + 27$:

Key	Display	Comments
CLR		
27	27	
+	27+	

3	$27+3$	
x	$27+3^*$	
8.5	$27+3^*8.5$	
ENT	52.5	Enter evaluates the entire equation at once

Implicit multiplication is supported. See the [Appendix : Implicit Multiplication](#) section for information.

3.3 Memory

There are 10 memory locations available. Memory locations can be accessed by selecting either the "RCL" (recall) or "STO" (store) buttons in the keypad.

Storing

Select "STO" and a location to store the evaluated expression to memory. If an expression is in the input area, the software will evaluate and store that result. If there is no expression in the input area, the last result will be stored.

Memory arithmetic is also available. Memory arithmetic uses the existing memory location's value and the evaluated expression as per the chart below. Operations performed on memory locations do not affect the contents of the entry line.

The following table describes the operations that can be performed on memory locations, where 'value' refers to the evaluated expression and memory location refers to the contents of a selected memory location:

Operand	Functionality
=	Overwrite the selected memory location with value.
+	Memory location plus value
-	Memory location minus value
x	Memory location multiplied by value
÷	Memory location divided by value

For example, to add the last calculated result to memory location 2:

- select "STO"
- tap "+"
- tap memory location 2

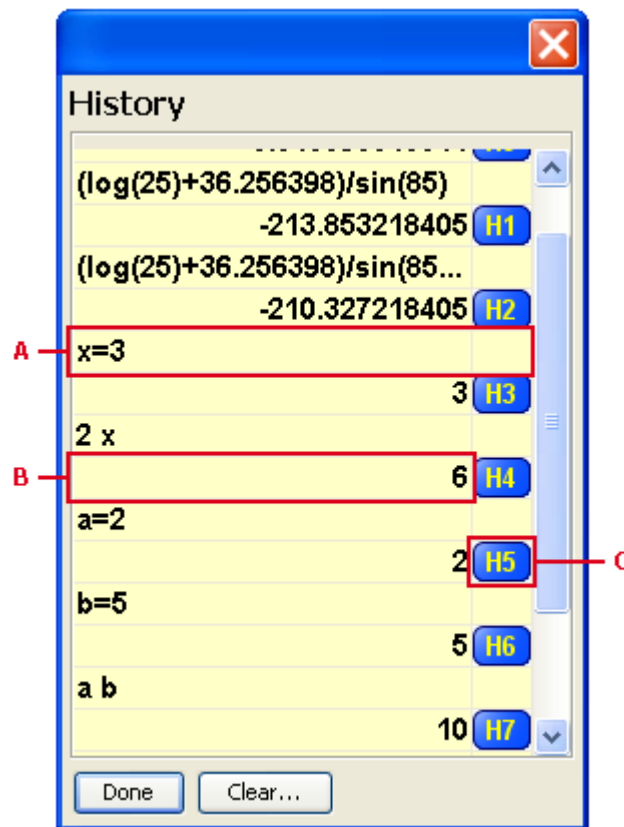
Recalling

Select "RCL" and a location to recall that location to the input area. The value will be placed at the current cursor location.

Clearing

Clear memory by choosing that option from the Data menu.

3.4 History



History stores the past 100 expression/result combinations (only the last expression and result is available in the View Window):

A. Expression: expressions are always displayed left justified. If the expression is too long to see all of it, an ellipse (...) will appear. Hover the mouse over the expression to see the entire expression as a tip. Select an expression to recall it to the input area.

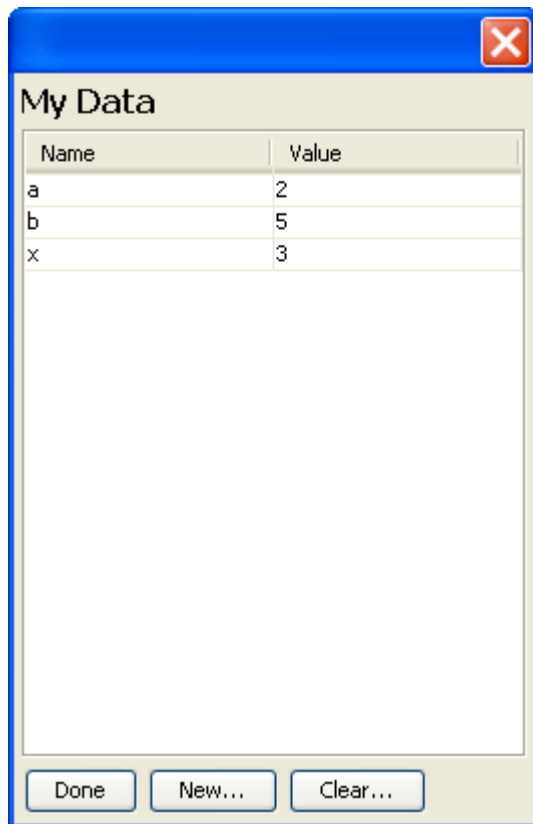
B. Result: results are always displayed right justified below its expression. Select a result to recall it to the input area.

C. History Location: history locations are designated by "H" and a number representing that location. Select the History Location to return the value's full precision to the input area.

Buttons:

- Done: select to return to the calculator.
- Clear: select to clear the History. Exiting the software also clears the History.

4 My Data



My Data displays all assigned variables. This data can be used anywhere in the software.

Accessing

See the [Navigation](#) section for information.

Display

The display is a table with two columns:

- Name: the name of the variable. The name consists of letters (capital or lower case) and optionally numbers 0-9. A name cannot start with a number. Note that the name is case sensitive, meaning that variable "abc" is different from variable "ABC". Variable names "pi" and "e" are not available. Variable names "x", "y" and "t" are discouraged (used by Graph analysis modes).
- Value: the variable's value. The value can be any real number in the supported range. See the [Appendix : Number Ranges](#) section. All expressions will be evaluated first before assigning it to the variable name.

Creating a New Variable

To create a new variable, either:

- Select New, enter a Name, enter a Value, and select the Enter on the keyboard.
- Use the equals operator in the form <Name> = <Value> [ENT] on any input area (e.g., calculator). For instance, type b = 5 [ENT] in the calculator's input area. b will be defined to 5. Note that this will overwrite variables with the same name.

Editing a Variable

Double-click either the Name or Value, modify and select Enter on the keyboard.

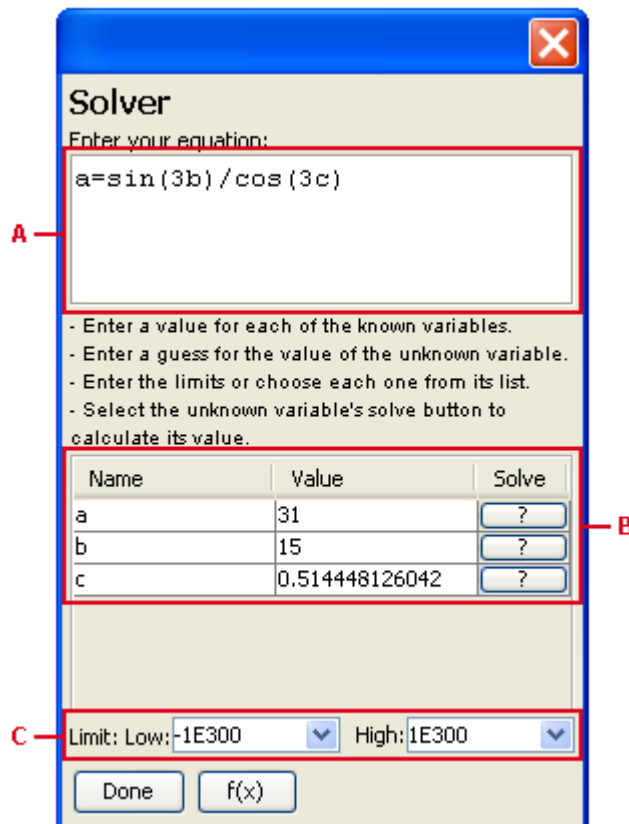
Using a Variable

Use a variable by typing its name into any input area (e.g., calculator) or right-mouse selecting a variable and choosing Use from the list to recall to the calculator. For instance, using c from above, type 2b in the calculator's input area and select [ENT]. The result will be 10.

Deleting a Variable

- Delete a single variable by right-mouse selecting a variable and choosing Delete from the list.
- Delete all variables by selecting the Clear button at the bottom of the display.

5 Solver



Solver is used to find numerical solutions to an equation with one or more variables.

Accessing

See the [Navigation](#) section for information.

Display

A. Equation: enter the equation here.

- Use your keyboard or select functions from the "f(x)" button.
- Variable names consist of letters (capital or lower case) and optionally numbers 0-9. A name cannot start with a number. Note that the name is case sensitive, meaning that variable "abc" is different from variable "ABC". Variable names "pi" and "e" are not available. Once created, all variables are stored for access anywhere within the application.
- As the equation is entered, the template is populated automatically.

B. Template: form that includes known and unknown variables.

- Enter values for all known variables. The value can be any real number in the supported range. See the [Appendix : Number Ranges](#) section. All expressions will be evaluated to a real number.
- To calculate the unknown variable, select the "?" button in the Solve column. Using the keyboard, navigate to the cell and select the space key.
- A value entered for an unknown variable acts as a guess.

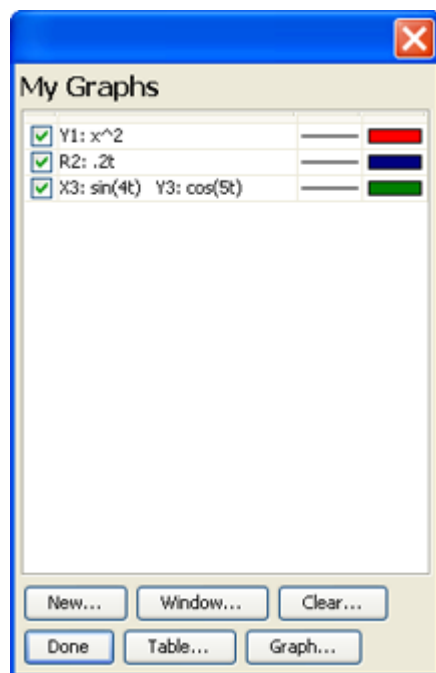
C. Limits: the low and high limits used when solving. Enter a low or high limit by selecting the current setting and changing the value or choose an option from the attached pop-up list. Use the Enter key to accept the change.

Methodology

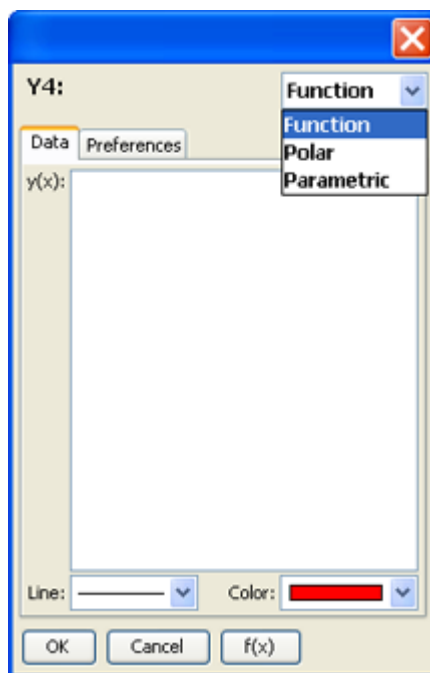
See the [Solve](#) function for information regarding solver methodology.

6 Graphing

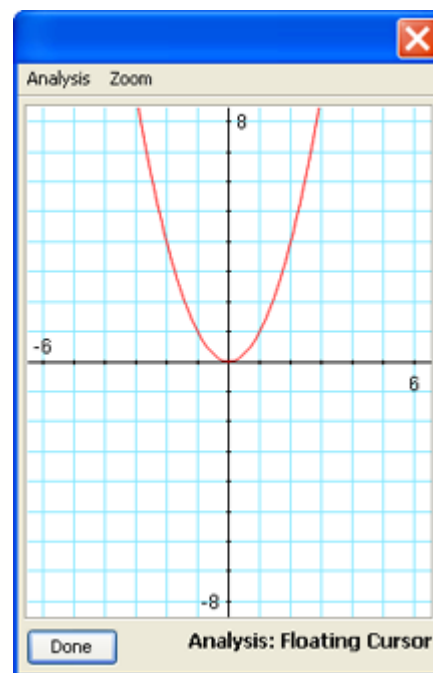
6.1 Overview



My Graphs



New/Edit Graph



Graph View

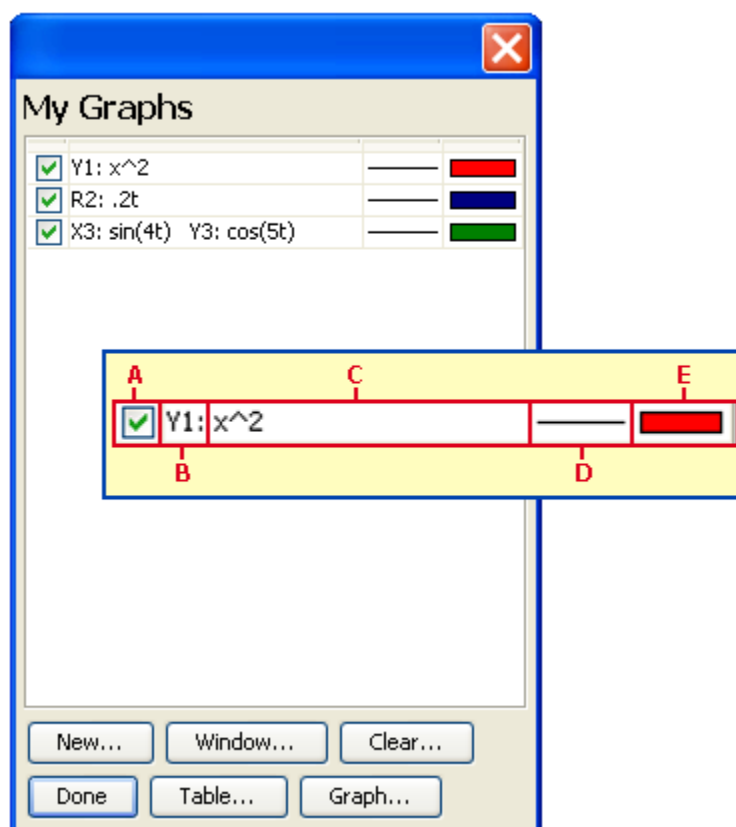
Graphing consists of three main areas:

- **My Graphs:** view expressions to be graphed. This is the home page for graphing. See [Navigation](#) for access information.
- **New/Edit Graph:** create and edit expressions to be graphed. Select the "New" button in My Graphs to create a new graph. Double-click an already created expression to edit it.
- **Graph View:** displays the graph expressions and offers options for analyzing the expressions visually. Select the "Graph" button in My Graphs to access.

Accessing

See the [Navigation](#) section for information.

6.2 My Graphs



A. Checkbox: a checkmark indicates which expressions will be graphed or included in the graph table.

B. Expression Name: the expression name is a function reference that can either be used when creating other graph expressions or used elsewhere in the application as a function call. If Y1 is defined as x^2 , uses include:

- Define a graph as $-Y1(x)$ [graphs $-x^2$].
- Return to the calculator and evaluate the function $Y1(3)$ [returns 9].

C. Graph Expression: displays the expression. Double-click to edit the expression. Right-mouse select for a list of options:

- [Quick Graph](#): graphs only the selected expression.
- [Edit](#): edit the expression.
- [Table](#): show the selected expression in the table.
- [Delete](#): delete the selected expression.

D. Pattern: select to change the line pattern.

E. Color: select to change the line's color.

F. Buttons:

- [New](#): select to create a new graph expression. See the [New/Edit Graph](#) section.
- [Window](#): select to edit the Window settings. See the [Zooming/Graph Window](#) section.
- [Table](#): select to display the graph table of all checked expressions. See the [Graph Table](#) section.
- [Graph](#): select to graph and analyze the checked expressions. See the [Graph View](#) section.
- [Clear](#): select to clear all graphs.

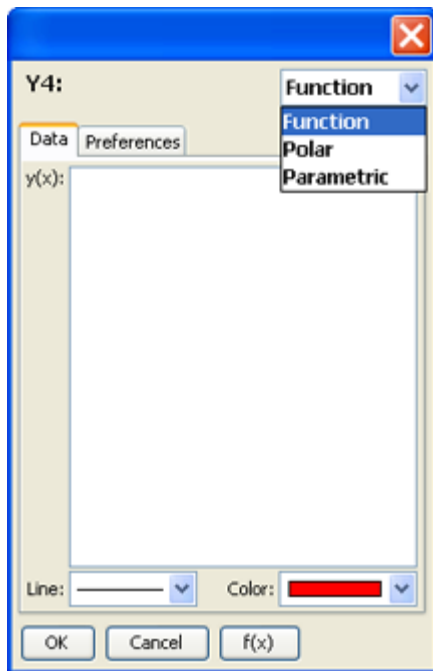
- Done: select to return to the calculator.

6.3 New/Edit Graph

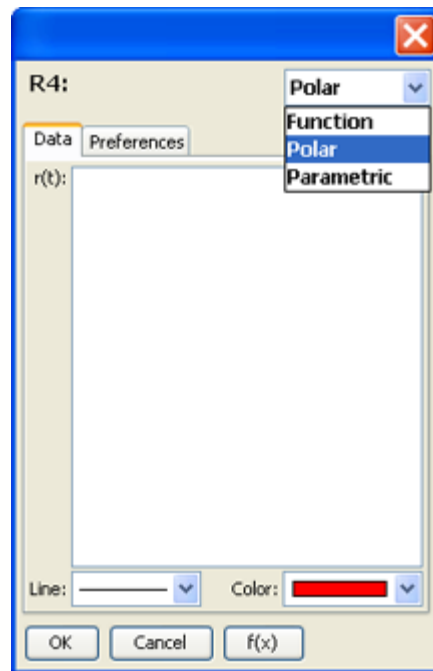
New/Edit Graph is used to create and edit expressions. Select the "New" button in My Graphs to create a new graph. Double-click an already created expression to edit it.

Select the **Graph Type** from the list in the top, right-hand corner. That selection changes both the Data and Preferences tabs. Each tab is discussed below.

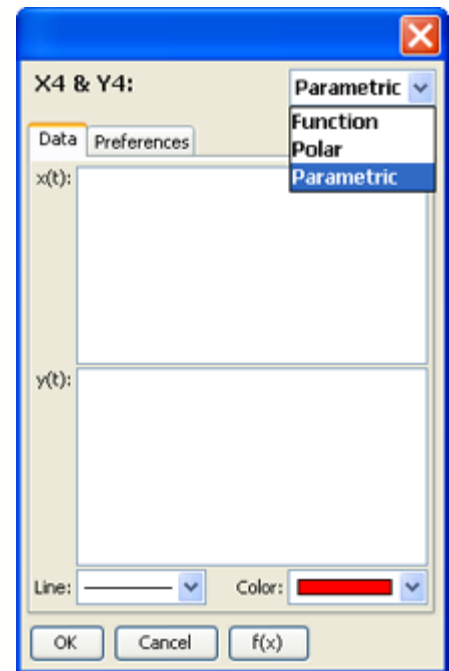
Data



Function Expressions - Data Tab



Polar Expressions - Data Tab



Parametric Expressions - Data Tab

- **Expression Name:** the expression name is a function reference that can either be used when creating other graph expressions or used elsewhere in the application as a function call. It is defined by the software and displayed in the top, left-hand corner of New/Edit Graph.
- **Expression Area:** enter the expression here. Use the computer keyboard or select functions from the "f(x)" button. The area is denoted as follows:
 - Function: $y(x)$ [y is the dependent variable, x is the independent variable used in the expression]
 - Polar: $r(t)$ [r is the dependent variable, t is the independent variable used in the expression]
 - Parametric: $x(t)$ and $y(t)$ [x and y are the dependent variables, t is the independent variable used in the expression]
- **Line:** select a line pattern [single thick, double thick, triple thick, dotted].
- **Color:** select a line color.
- **Buttons:**
 - OK: saves changes and returns to My Graphs.
 - Cancel: throws out changes and returns to My Graphs.

Preferences

Y4: Function

Data Preferences

Trig Mode: Radians

X Minimum: $-1e300$

X Maximum: $1e300$

Default... Set All...

OK Cancel f(x)

Function Expressions - Preferences Tab

R4: Polar

Data Preferences

Trig Mode: Radians

T Minimum: 0

T Maximum: 2π

T Step: $\pi/500$

Default... Set All...

OK Cancel f(x)

Polar Expressions - Preferences Tab

X4 & Y4: Parametric

Data Preferences

Trig Mode: Radians

T Minimum: 0

T Maximum: 2π

T Step: $\pi/500$

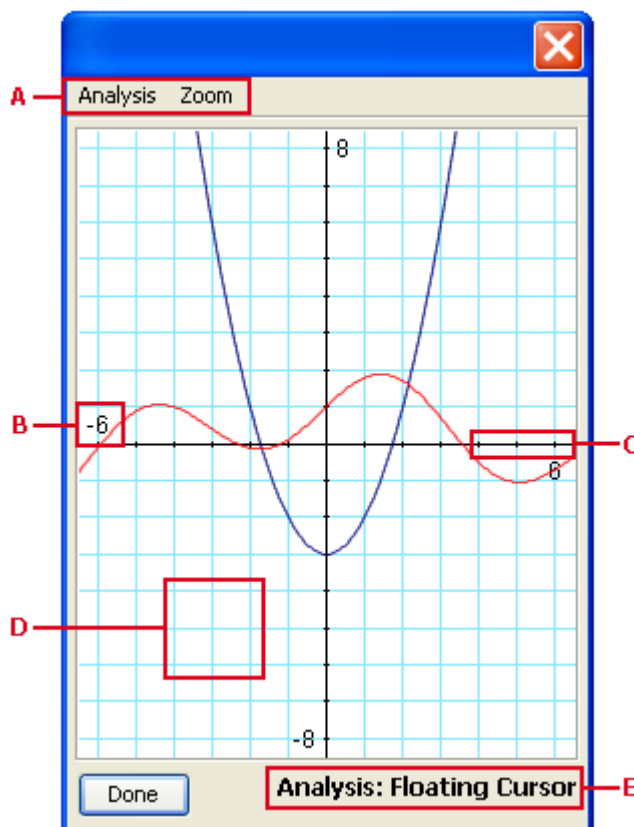
Default... Set All...

OK Cancel f(x)

Parametric Expressions - Preferences Tab

- **Trig Mode:** trigonometric mode to use when analyzing trigonometric functions.
- **Minimum:** starting plot value for the independent variable. Can either be a value or expression.
- **Maximum:** ending plot value for the independent variable. Can either be a value or expression.
- **Step:** distance between plotted points. Can either be a value or expression.
- **Buttons:**
 - Default: returns the preferences to its default settings (as pictured above). New Graph uses the same preferences for the previous expression of the same graph type.
 - Set All: set all expressions of the selected graph type to the preferences for the current expression.
 - OK: saves changes and returns to My Graphs.
 - Cancel: throws out changes and returns to My Graphs.

6.4 Graph View



Displays the graph expressions within the graph window and offers options for analyzing the expressions visually.

A. Menus: there are two menu options. One menu contains [Analysis](#) modes and the other contains [Zoom](#) functions. Select an option from one of the menus to activate.

B. Range: min and max data points along the x axis and y axis. See the [Zooming/Graph Window](#) section.

C. Axis: axis designates where x is 0 and y is 0. The x-axis is horizontal while the y-axis is vertical. See the [Zooming/Graph Window](#) section.

D. Grid: grid pattern.

E. Status Bar: indicates the current selection for [Analysis](#) mode or [Zoom](#) function.

Buttons: select the "Done" button to return to My Graphs.

6.4.1 Analysis Modes

There are seven analysis modes for analyzing graphs. This chart provides a brief overview:

Type	Interaction	Function	Polar	Parametric
Floating Cursor	Drag Cursor	x	x	x
Trace/Evaluate	Drag Cursor	x	x	x
Intersection*	Select Range	x		
Zero	Select Range	x		
Minimum	Select Range	x		
Maximum	Select Range	x		
Table...		x	x	x

* available when two or more expressions are graphed.

General Functionality

- Select an analysis mode by selecting the Analysis menu and choosing an option. Only the available analysis modes are shown.
- When an analysis mode is selected, the status bar displays the mode.
- Analysis modes include tips. After selecting a mode, hover the mouse over the graph window until it appears (not available during the test period).
- The results of the last analysis mode are stored for reference elsewhere in the application. These variables are accessed similar to other variables. See the [My Data](#) section for more information.

Floating Cursor Mode

- **Graph Types:** Function, Polar, Parametric
- **Functionality:** display the current mouse coordinates.
- **Display:** no change to graph window; shows cursor position in a pop-up window.
- **Process:** click and hold the mouse anywhere in the view window.

Trace/Evaluate Mode

- **Graph Types:** Function, Polar, Parametric
- **Functionality:** trace or evaluate the selected expression.
- **Display:** graph window shrinks to accommodate analysis mode; shows cursor position both visually and numerically.
- **Process:**
 1. Select an expression from the list.
 2. Drag the mouse along the curve. Note: the cursor indicates current position.
 3. Enter an "X" value to calculate a "Y" value. Note: the cursor indicates current position.

Intersection Mode

- **Graph Types:** Function
- **Functionality:** find the intersection between two expressions.
- **Display:** graph window shrinks to accommodate analysis mode; shows cursor position both visually and numerically.
- **Process:**
 1. Select an expression from the first list and a different expression from the second list.
 2. Draw bounds around the intersection point:
 - Click on the left side of the range.
 - Drag to the right side of the range.
 - Release.

Zero Mode

- **Graph Types:** Function
- **Functionality:** find the point where the selected expression intersects the x-axis. Also known as Root analysis.
- **Display:** graph window shrinks to accommodate analysis mode; shows cursor position both visually and numerically.
- **Process:**
 1. Select an expression from the list.
 2. Draw bounds around the zero point:
 - Click on the left side of the range.
 - Drag to the right side of the range.
 - Release.

Minimum Mode

- **Graph Types:** Function
- **Functionality:** find the selected equation's minimum point.
- **Display:** graph window shrinks to accommodate analysis mode; shows cursor position both visually and numerically.
- **Process:**
 1. Select an expression from the list.
 2. Draw bounds around the minimum point:
 - Click on the left side of the range.
 - Drag to the right side of the range.
 - Release.

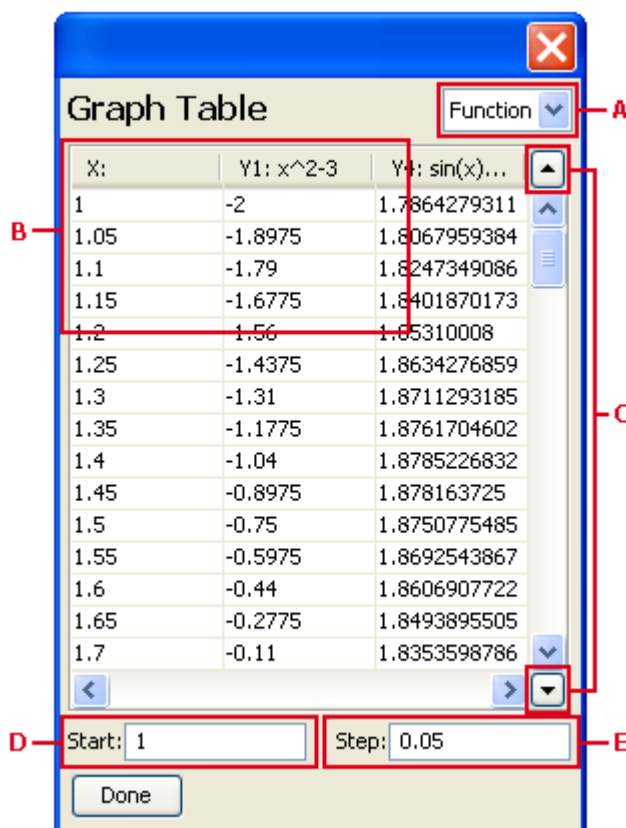
Maximum Mode

- **Graph Types:** Function
- **Functionality:** find the selected equation's maximum point.
- **Display:** graph window shrinks to accommodate analysis mode; shows cursor position both visually and numerically.
- **Process:**
 1. Select an expression from the list.
 2. Draw bounds around the maximum point:
 - Click on the left side of the range.
 - Drag to the right side of the range.
 - Release.

Graph Table

- **Graph Types:** Function, Polar, Parametric
- **Functionality:** displays a table of data pertaining to the displayed graph expressions.
- See the [Graph Table](#) section for additional information.

6.4.2 Graph Table



Accessing

Access the graph table via:

- My Graphs: check the desired expressions then choose the "Table" button.
- My Graphs: right-mouse select an expression and choose Table from the list.
- Graph View: choose Table from the Analysis menu.

A. Graph Type: expressions of the same type are displayed at the same time. Select the desired Graph Type from the list.

B. Table: the table displays numerical data pertaining to the selected expressions.

- The first column is reserved for the independent variable (Function: X, Polar: T, Parametric: T). Start is the top of the table and Step is the difference between points for the independent variable.
- Each additional column is for the expressions. Each graph type uses a different number of columns:
 - Function: one column (X)
 - Polar: three columns (R, X, Y)
 - Parametric: two columns (X, Y)
- Scroll horizontally to see additional expressions.
- Scroll vertically to see 100 independent data points.

C. Scroll Buttons: use the scroll buttons to adjust the Start value up or down.

D. Start: start value for the independent variable (top of the table). Adjust the Start value by selecting, changing the value and selecting Enter on the keyboard or use the scroll buttons [C].

E. Step: distance between evaluated points for the independent variable.

6.4.3 Zooming/Graph Window

There are eight zoom modes for adjusting the graph window:

Type	Interaction
Box	Draw Box
In	Select Point
Out	Select Point
Previous	None Required
Default	None Required
Trig	None Required
Square	None Required
Window	

General Functionality

- Each Zoom mode has the effect of modifying the Window Settings. These Settings are defined under Window below.
- Select a zoom mode by selecting the Zoom menu and choosing an option.
- Some modes require interaction and some are automatic. Modes that require interaction are denoted in the status bar.
- Zoom modes that require interaction include tips. After selecting a mode, hover the mouse over the graph window until it appears (not available during the test period).

Box

- **Functionality:** zoom to the specified area in the graph window.
- **Display:** draw a box in the graph window, window settings adjust to the selected area.
- **Process:** draw a box in the graph window:
 - Click and hold at the top, left-hand corner of the box.
 - Drag to the bottom, right-hand corner of the box.
 - Release.

In

- **Functionality:** zoom in and center at the specified point in the graph window.
- **Display:** select a point in the graph window, divides X/Y range values by Zoom Scale, re-centers at the selected point.
- **Process:** select a desired point within the graph window.
 - Click down within the graph window.
 - Release.

Out

- **Functionality:** zoom out and center at the specified point in the graph window.
- **Display:** select a point in the graph window, multiplies X/Y range values by Zoom Scale, re-centers at the selected point.
- **Process:** select a desired point within the graph window.
 - Click down within the graph window.
 - Release.

Previous

- **Functionality:** returns to the previous graph window settings.
- **Display:** returns to the previous graph window settings.
- **Process:** no interaction required.

Default

- **Functionality:** returns to the default graph window settings. See Window below for additional information.
- **Display:** returns to the default window settings.
- **Process:** no interaction required.

Trig

- **Functionality:** adjusts the graph window for improved viewing of trigonometric expressions.
- **Display:** x-axis range is set to -2π and 2π and x-scale is set to $\pi/2$. The y-axis range and y-scale is not adjusted.
- **Process:** no interaction required.

Square

- **Functionality:** attempts to adjust the x and y ranges so the change of x is the same as the change of y.
- **Display:** attempts to make the grid square (so circles look circular).
- **Process:** no interaction required.

Window

- **X Minimum:** minimum on the x-axis (horizontal, far left edge of the graph window). [default = -6.5]
- **X Maximum:** maximum on the x-axis (horizontal, far right edge of the graph window). [default = 6.5]
- **Y Minimum:** minimum on the y-axis (vertical, bottom edge of the graph window). When in an analysis mode, the bottom 12.5% is clipped, however Y Min setting remains the same. [default = -8.5]
- **Y Maximum:** maximum on the y-axis (vertical, top edge of the graph window). When in an analysis mode, the top 12.5% is clipped, however Y Max setting remains the same. [default = 8.5]
- **X Scale:** determines the tick intervals on the x-axis. [default = 1.0]
- **Y Scale:** determines the tick intervals on the y-axis. [default = 1.0]
- **Zoom Scale:** ratio to jump when zooming in or out. A setting of 2 means 2 times. [default = 2.0]
- **Show Axis:** check this box to show the axis. [default = checked]
- **Show Grid:** check this box to show the grid. [default = checked]
- **Show Range:** check this box to show the range values. [default = checked]
- **Buttons:**
 - OK: saves changes and exits Window Settings.
 - Cancel: throws out changes and exits Window Settings.
 - Default: restores the default graph window settings.

7 Functions

7.1 Symbol Chart

This section outlines common symbols and their equivalents within this software. Select a Function Name to go to that function reference.

SymbolFunction Name

–	Subtraction
.	Decimal Separator
!=	Not Equal
" "	Quotation Marks
x%	Percent
&&	And
()	Parentheses
*	Multiplication
/	Division
÷	Division
:	Semi-Colon
	Or
+	Addition
*	Multiplication
(–)	Negate
<	Less Than
<=	Less Than or Equal To
<>	Not Equal
=	Equals
==	Equals
>	Greater Than
>=	Greater than or Equal To
^	Power
←	Backspace
\sqrt{x}	Square Root
$^x\sqrt{y}$	Root
Π	pi (constant)
1/x	Reciprocal
10^x	Power of 10
abs	Absolute Value
acos	Arc-Cosine
asin	Arc-Sine
atan	Arc-Tangent
CLR	Clear
cos	Cosine
e	e (constant)
e^x	Exponential
EE	Exponent
ENT	Enter
fact	Factorial
int	Integer
last	Last
ln	Natural Logarithm
log	Logarithm
nCr	Combinations
nPr	Permutations

RCL	Memory
root	Root
sin	Sine
solve	Solve
sqrt	Square Root
STO	Memory
tan	Tangent
x	Multiplication
x!	Factorial
x^{-1}	Reciprocal
x^2	Square
xth root	Root
x^y	Power

7.2 Categories

Change the calculator's Function List to display different functions in the first two rows of the keypad. These functions are listed here.

math				
x^2	\sqrt{x}	x^y	$x\sqrt{y}$	1/x
log	10^x	ln	e^x	x%

number				
abs	int	last	=	
nPr	nCr	fact		

trig				
asin	acos	atan		
sin	cos	tan	Π	

boolean				
==	>	<	&&	"
!=	>=	<=		solve

7.3 A,B,C

7.3.1 Absolute Value

abs(value)

Returns absolute value of value.

Category: number

Examples:

- $\text{abs}(-15.6)$: returns 15.6

7.3.2 Addition

valueA + valueB

Returns valueA plus valueB.

Category: not applicable

Examples:

- $3.2 + 4.6$: returns 7.8

7.3.3 And

valueA && valueB

Returns true if both valueA and valueB are true.

Category: boolean

Examples:

- $0 \ \&\& \ 5$: returns false
- $1 \ \&\& \ 5$: returns true
- $(5 > 3) \ \&\& \ (5 < 3)$: returns false
- $(5 \neq 3) \ \&\& \ (6 \neq 4)$: returns true

7.3.4 Arc-Cosine

acos(value)

Returns arc-cosine of value.

Category: trig

Examples:

- $\text{acos}(-.5)$: returns 2.0944 when Trig Mode set to Radians
- $\text{acos}(-.5)$: returns 120 when Trig Mode set to Degrees

7.3.5 Arc-Sine

asin(value)

Returns arc-sine of value.

Category: trig

Examples:

- $\text{asin}(.5)$: returns 0.5236 when Trig Mode set to Radians
- $\text{asin}(.5)$: returns 30 when Trig Mode set to Degrees

7.3.6 Arc-Tangent

atan(value)

Returns arc-tangent of value.

Category: trig

Examples:

- $\text{atan}(1)$: returns 0.7854 when Trig Mode set to Radians
- $\text{atan}(1)$: returns 45 when Trig Mode set to Degrees

7.3.7 Backspace

←

Moves backwards one space, deleting the item before the cursor.

Category: not applicable

Examples:

- $345.67 \leftarrow$: shows 345.6

7.3.8 Clear

CLR

If there is an expression in the input area, selecting clear deletes the expression. If there is no expression in the input area, clear clears the view window. The previous calculation is still available in history.

Category: not applicable

7.3.9 Combinations

 $nCr(n; r)$

Returns the number of combinations of n taken r at a time. n, r must be integer values where $r \leq n, 0 \leq n, r \leq 170$. Returned value correspond to $n!/(r!(n-r)!)$

Category: number

Examples:

- $nCr(8; 3)$: returns 56

7.3.10 Cosine

 $\cos(\text{value})$

Returns cosine of value.

Category: trig

Examples:

- $\cos(30)$: returns 0.1543 when Trig Mode set to Radians
- $\cos(30)$: returns 0.866 when Trig Mode set to Degrees

7.4 D,E,F,G,H

7.4.1 Decimal Separator

. (decimal point)

Separates the integer and fractional portion of the number.

Category: not applicable

7.4.2 Division

valueA / valueB

Returns valueA divided by valueB.

Category: not applicable

Examples:

- $88 / 44$: returns 2
- $18.6 / 4.5$: returns 4.1333

7.4.3 e

e

Constant e is equal to 2.71828182846. Cannot use explicit multiplication with constant e.

Category: not applicable

Examples:

- $2 * e$: 5.4365

7.4.4 Enter

ENT

Select to evaluate an expression or accept a value in an input area.

7.4.5 Equals

valueA == valueB

Returns true if valueA is equal to value valueB. Note that this operator is entered using two consecutive "=" characters, not a single "=" character. The single "=" is used for variable assignment and solver equation definitions.

Category: boolean

Examples:

- $5 == 5$: returns true
- $5 == 1 - 5$: returns false

<variable name> = value

Assigns a value to a variable. See the [My Data](#) section for more information.

Category: number

Examples:

- $a = 3$: assigns 3 to variable 'a'

equation = equation

Used for creating solver equations. See the [Solver](#) section for more information.

7.4.6 Exponent

value E exponent

Used to make value times 10 raised to exponent where exponent is an integer (whole number). $\text{value} \times 10^{\text{exponent}}$ must lie between 1E-308 and 1E308 inclusive.

Category: not applicable

Examples:

- 5E3 : equivalent to 5000
- 5E-3: equivalent to 0.005
- 314 E (-) 2: equivalent to 3.14

7.4.7 Exponential

e^{value}

Returns e raised to the value power.

Category: math

Examples:

- e^4 : returns 54.5982
- $e^{6.85}$: returns 943.8809

7.4.8 Factorial

fact(value)

Returns factorial of value, where $-169 < \text{value} \leq 170$.

Category: number

Examples:

- fact(6) : returns 720

7.4.9 Greater Than

valueA > valueB

Returns true if valueA greater than valueB.

Category: boolean

Examples:

- $1 > 0.55$: returns true
- $1 > 5$: returns false
- $1 > 1$: returns false

7.4.10 Greater Than or Equal To

valueA >= valueB

Returns true if valueA greater than or equal to valueB.

Category: boolean

Examples:

- $1 \geq 0.55$: returns true

- $1 \geq 5$: returns false
- $1 \geq 1$: returns true

7.5 I,J,K,L,M,N

7.5.1 Integer

int(value)

Returns the greatest integer less than or equal to value.

Category: number

Examples:

- $\text{int}(4.5)$: returns 4
- $\text{int}(-4.5)$: returns -5

7.5.2 Last

last

Returns the last calculated value.

Category: number

7.5.3 Less Than

valueA < valueB

Returns true if valueA less than valueB.

Category: boolean

Examples:

- $1 < 0.55$: returns false
- $1 < 5$: returns true
- $1 < 1$: returns false

7.5.4 Less Than or Equal To

valueA <= valueB

Returns true if valueA less than or equal to valueB.

Category: boolean

Examples:

- $1 \leq 0.55$: returns false
- $1 \leq 5$: returns true
- $1 \leq 1$: returns true

7.5.5 Logarithm

log(value)

Returns the base 10 logarithm of value.

Category: math

Examples:

- $\log(4)$: returns 0.6021
- $\log(78.36)$: returns 1.8941

7.5.6 Multiplication

valueA * valueB

Returns valueA times valueB.

Category: not applicable

Examples:

- $5 * 63$: returns 315
- $8.2 * 32.65$: returns 267.73

7.5.7 Natural Logarithm

ln(value)

Returns the natural logarithm of value.

Category: math

Examples:

- $\ln(4)$: returns 1.3863
- $\ln(52.43)$: returns 3.9595

7.5.8 Negate

—

Inserts a negative sign. This software does not differentiate between negate and subtract.

Category: not applicable

7.5.9 Not Equal

valueA != valueB**valueA <> valueB**

Returns true if valueA does not equal valueB.

Category: boolean

Examples:

- $5 != 6$: returns true
- $(5*3) != 15$: returns false

7.6 O,P,Q

7.6.1 Or

valueA || valueB

Returns true if valueA is true or valueB is true.

Category: boolean

Examples:

- $(5 == 5) \parallel (4 > 5)$: returns true
- $(5 != 5) \parallel (4 > 5)$: returns false

7.6.2 Parentheses

parentheses ()

Use parentheses to establish precedence when performing calculations. Items within parentheses are evaluated first.

Category: not applicable

Examples:

- $3 + (4 * 5)$: returns 23
- $(3 + 4) * 5$: returns 35

7.6.3 Percent

value%

In general, valueA% returns the equivalent of $\text{valueA} / 100$. When it is preceded by a value and a math operand, the following occurs in each case:

value% : $\text{value} / 100$

valueA + valueB% : $\text{valueA} + (\text{valueA} * (\text{valueB} / 100))$

valueA - valueB% : $\text{valueA} - (\text{valueA} * (\text{valueB} / 100))$

valueA * valueB% : $\text{valueA} * (\text{valueB} / 100)$

valueA / valueB% : $\text{valueA} / (\text{valueB} / 100)$

Category: math

Examples:

- 42 % : returns 0.42
- $80 + 10 \%$: returns 88 (80 + 10% of 80)
- $80 - 10 \%$: returns 72 (80 - 10% of 80)
- $522 * 63 \%$: returns 328.86
- $24 / 33 \%$: returns 72.7273

7.6.4 Permutations

nPr(n; r)

Returns the number of permutations of n taken r at a time. n, r must be integer values where $r \leq n$, $0 \leq n$, $r \leq 170$. Returned value correspond to $n!/(n-r)!$

Category: number

Examples:

- $nPr(8;3)$: returns 336

7.6.5 pi

pi (π)

Constant pi is equal to 3.14159265359.

Category: trig

Examples:

- $\pi/2$: 1.5708

7.6.6 Power

valueA ^ valueB

Returns valueA raised to valueB.

Category: math

Examples:

- 3^3 : returns 27
- $3^{-2.2}$: returns .0892

7.6.7 Power of 10

10 ^ value

Returns 10 raised to the power of value.

Category: math

Examples:

- $10^{-1.23}$: returns 0.0589

7.6.8 Quotation Marks

" "

Quotation marks are used to define an equation and variable using the function solve. See [Solve](#) for additional information.

Category: boolean

7.7 R,S,T

7.7.1 Reciprocal

1 / value

Returns 1 divided by value.

Category: math

Examples:

- $1/15$: returns 0.0667
- $1/89.56$: returns 0.0112

7.7.2 Root

root(y; x)

Returns x^{th} root of y.

Category: math

Examples:

- $\text{root}(27; 3)$: returns 3
- $\text{root}(84.5; 5)$: returns 2.4287

7.7.3 Semi-Colon

semi-colon (;)

Separates arguments in function calls.

Category: not applicable

Examples:

- `root(y; x)` : separate the y and x variables in the root function call

7.7.4 Sine

`sin(value)`

Returns sine of value.

Category: trig

Examples:

- `sin(30)` : returns -0.9880 when Trig Mode set to Radians
- `sin(30)` : returns 0.5 when Trig Mode set to Degrees

7.7.5 Solve

`solve()`

The solver uses a non-symbolic iterative approach to solve expressions for a particular variable. Because the method is iterative it can take a significant amount of time to complete and may fail to return a result or return a result that is inexact but within the tolerance permitted when using floating point math. This function is applied automatically in the Solver.

The function returns a floating point number containing the value for variable that causes expression to be equal to zero. Expression and variable are both strings. The algorithm will use default minimum and maximum bracket values of $-1E300$ and $1E300$ respectively.

The iteration methodology is as follows: It will take the mid-point between the minimum and maximum and step toward the maximum bracket until a sign change is detected. It will then search for a root around the sign change using Brent's method. If the search in a) does not yield a sign change then it steps negatively towards the minimum bracket from the mid-point between the bracket values until a sign change is found. It will then search for a root around the sign change using Brent's method. If a sign change is not found in a) or b) it gives up.

The following forms are available:

`solve("expression"; "variable")`

- **expression:** the expression to solve. Must be in quotations.
- **variable:** the variable within the expression. Must be in quotations.

Category: boolean

Examples:

- `solve("x*5=32"; "x")` : returns 6.4

`solve("expression"; "variable"; guess)`

- **expression:** the expression to solve. Must be in quotations.
- **variable:** the variable within the expression. Must be in quotations.
- **guess:** starting point.

Category: boolean

Examples:

- `solve("5=x^2-3"; "x"; 2.5)` : returns 2.8284

`solve("expression"; "variable"; lower; upper)`

- **expression:** the expression to solve. Must be in quotations.
- **variable:** the variable within the expression. Must be in quotations.
- **lower:** lower boundary to begin bracketing.
- **upper:** upper boundary to begin bracketing.

Category: boolean

Examples:

- `solve("y=x^2-3"; "x"; 2.5; -6,6)` : returns -3.3166 where $y=8$

7.7.6 Square

`value ^ 2`

Returns value multiplied by value.

Category: math

Examples:

- `5 ^ 2` : returns 25
- `-3 ^ 2` : returns -9

7.7.7 Square Root

`sqrt(value)`

Returns the square root of value.

Category: math

Examples:

- `sqrt(9.9)` : returns 3.1464

7.7.8 Subtraction

`valueA – valueB`

returns valueA minus valueB.

Category: not applicable

Examples:

- `2 - 4.89` : returns 4.43

7.7.9 Tangent

`tan(value)`

Returns tangent of value.

Category: trig

Examples:

- $\tan(0.7854)$: returns 1 when Trig Mode set to Radians
- $\tan(45)$: returns 1 when Trig Mode set to Degrees

8 Appendix

8.1 Calculator Error Messages

The following error messages may appear. Common causes are also listed.

- **-Infinity**: a value is calculated that is smaller than $-1e308$.
- **+Infinity**: a value is calculated that is greater than $1e308$.
- **Can't bracket solution**: returned when solving and the solver cannot find an answer
- **Division by 0**: a value is divided by zero
- **Iteration limit exceeded**: the solver has a cap on how long it will try to find an answer. This error is returned if that limit is exceeded
- **Missing "**: quotation marks are required but missing
- **Missing left delimiter**: missing (
- **Missing or invalid operand**: expression not completed or missing/invalid operator
- **Missing right delimiter**: missing)
- **Not a real number**: result is a complex number
- **Not enough arguments**: function call missing all or some of its arguments (e.g., $\sin()$ without sending a value)
- **Operand out of range**: a value is entered that is outside the value limits of the function called
- **Too many arguments**: function call with too many arguments (e.g., $\sin(2;3)$ when \sin requires one argument)
- **Too many nested operations**: more than 64 nested parentheses ()
- **Unknown function**: calling a function that does not exist
- **Unknown variable**: using a variable that does not exist
- **Missing exponent value**: scientific notation constant "E" entered without the exponent part (e.g., "3.13e")
- **Invalid variable name**: see the [My Data](#) section for information regarding variable naming.
- **Guess outside of limits**: solver guess is outside of the set upper and lower limits
- **Invalid data type**: data type not recognized by the software
- **0^0 is undefined**: product does not allow 0 raised to the 0th power.

8.2 Number Ranges

This product supports real numbers in the range $1E308$ to $1E-308$. In general, numbers are displayed with up to 12 decimal places. For better accuracy, numbers are stored internally with 15 decimal places.

8.3 Implicit Multiplication

In certain cases, implicit multiplication is available. Implicit multiplication is where 2 times x is entered as $2x$. Multiplication is assumed if the math symbol is missing.

The following examples will support implicit multiplication:

- $2x$: assumed to be $2 * x$.
- $2 x$: (note: the space between 2 and x), assumed to be $2 * x$.
- $a b$: (note: the space between a and b), assumed to be $a * b$.
- $3(x+2)$: assumed to be $3 * (x + 2)$.
- $4\sin(25)$: assumes $4 * \sin(25)$.
- 2π : assumes $2 * \text{the constant pi}$

The following examples will not support implicit multiplication

- ab : this is not $a * b$, but instead the variable 'ab'. (Enter a multiplication symbol or space between a and b to handle correctly.)
- $a2$: this is not $a * 2$, but instead the variable 'a2'. (Enter a multiplication symbol or space between a and b to handle

correctly.)

- $a(2+3)$: this is not $a * (2+3)$, but instead the function call $a(5)$. (A number before a parentheses is allowed but a variable before a parentheses is not. Also, a space between a and $(2+3)$ would be considered a function call.)
- $2e$: it is unknown whether exponential notation was expected or the calculation is 2 times the constant e .

8.4 Legal and Disclaimers

Infinity Softworks, Inc., makes no warranty, either expressed or implied, including but not limited to any implied warranties of merchantability and fitness for a particular purpose, regarding any programs or book materials and makes such materials available solely on an "as-is" basis.

In no event shall Infinity Softworks, Inc., be liable to anyone for special, collateral, incidental, or consequential damages in connection with or arising out of the purchase or use of these materials, and the sole and exclusive liability of Infinity Softworks, Inc., regardless of the form of action, shall not exceed the purchase price of this application. Moreover, Infinity Softworks, Inc., shall not be liable for any claim of any kind whatsoever against the use of these materials by any other party.

powerOne is copyright 1997-2006. Infinity Softworks is trademark and powerOne is registered trademark Infinity Softworks, Inc. All rights reserved. All other trademarks and registered trademarks are property of their respective owners.